

1) Sensing surface, 2) Housing, 3) Cover



### Basic features

Approval/Conformity	CE UKCA cULus WEEE
Basic standard	IEC 60947-5-2
Scope of delivery	Nut (2x)
Sensitivity	adjustable on base unit
Series	M12

### Electrical connection

Cable length L	2 m
Connection	Special connector-Special connector
Polarity reversal protected	not relevant
Short-circuit protection	not relevant

### Electrical data

Operating voltage $U_b$	4...8 VDC
Rated insulation voltage $U_i$	75 V DC
Ripple max. (% of $U_e$ )	10 %
Switching frequency	100 Hz
Utilization category	DC -13

### Environmental conditions

Ambient temperature	-30...80 °C
IP rating	IP67

### Functional safety

MTTF (40 °C)	1813 a
--------------	--------

### Interface

Interface	Special interface
-----------	-------------------

### Material

Cover material	POM
Housing material	1.4301 stainless steel
Material jacket	PUR
Material sensing surface	PTFE

### Mechanical data

Dimension	Ø 12 x 34 mm
Installation	non-flush
Size	M12x1
Thread (A)	M12x1
Tightening torque	40 Nm

### Range/Distance

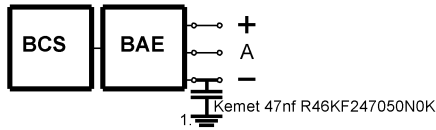
Hysteresis H max. (% of $S_r$ )	10.0 %
Measuring range	1...8 mm
Rated operating distance $S_n$	8 mm
Repeat accuracy max. (% of $S_r$ )	2 %
Temperature drift max. (% of $S_r$ )	20 %

Remarks

Required accessories, sensor amplifier BAE SA-...  
For more information about MTTF and B10d see MTTF / B10d Certificate

Indication of the MTTF- / B10d value does not represent a binding composition and/or life expectancy assurance; these are simply experiential values with no warranty implications. These declared values also do not extend the expiration period for defect claims or affect it in any way.

**Installation remarks**



1) Machine GND